



Bladins
International School of Malmö



150 years

OF EDUCATIONAL TRADITION

A Truly International School

- IB World School

PYP1- MYP5
ages 6 to 16

Safe Environment
Inclusive Community
Future Focused Learning

150 years

Tradition of Quality

WHY BISM?

"We love the IB approach, focusing on leadership and global citizenship, while preparing our child for potential future moves"

Bladins School Foundation, founded 150 years ago, is one of Sweden's oldest private institutions. Initially a preparatory school excelling in science, mathematics, and modern languages, that prepared students for state secondary schools. The school's logo, a lily, honours its first principal, Mr. Lilja.

Bladins International School of Malmö (BISM) was founded in 1987 to serve the Australian expatriate community, when Kockums required a school for international children as part of their work with Australian Navy contracts.

Today, Bladins consists of five schools: International and Swedish Preschools, Swedish and International Primary and Middle Schools, as well as a Swedish High School. We educate children and young people starting from the early preschool years until they are ready to embark on a career or university studies and beyond.



Welcome!

Welcome to Bladins International School of Malmö (BISM), where we nurture responsible learners for the future. Since our founding in 1987, we have grown into a vibrant, multicultural community with students from over 50 countries. At BISM, we offer a caring, supportive environment that fosters curiosity, innovation, and respect for all individuals.

As an IB World School, we provide a holistic education through the Primary and Middle Years Programmes, encouraging critical thinking, global awareness, and multilingualism. Our dedicated educators work closely with students and families to ensure academic, social, and emotional development, empowering students to reach their full potential.

We take pride in our inclusive culture, where transparent communication and mutual respect are key. At BISM, students are encouraged to take ownership of their learning, develop leadership qualities, and embrace lifelong learning.

We look forward to partnering with you on your child's educational journey.

Kind regards

Anders Hjelm, Head of school





"BISM is not just a school it is where the future generation is forged"

Ayaan Irfan, Student

A Global Education through the IB Framework

As an accredited International Baccalaureate (IB) World School, we are a member of a global community of over 5,000 schools:

- offering both the Primary Years Programme (PYP) and Middle Years Programme (MYP), emphasising academic rigour, intercultural understanding, and respect.
- fostering critical thinking, ethical behaviour, and engagement with local and global communities,
- integrating STEAM education, with its hands-on, project-based learning that prepares students for future challenges; by developing essential life and career skills, such as creativity, communication, collaboration, and adaptability.
- nurturing a growth mindset and providing authentic learning opportunities, the school ensures that its students are future-ready, equipped with the skills and attitudes necessary for success in an increasingly interconnected world.



"To me, BISM is more than just a school. Your dreams and hopes are encouraged and believed in.

- It's a place where you know that the teachers truly care, the learning environment makes you feel supported, as if you matter, and you understand that it's okay not to know the answer.

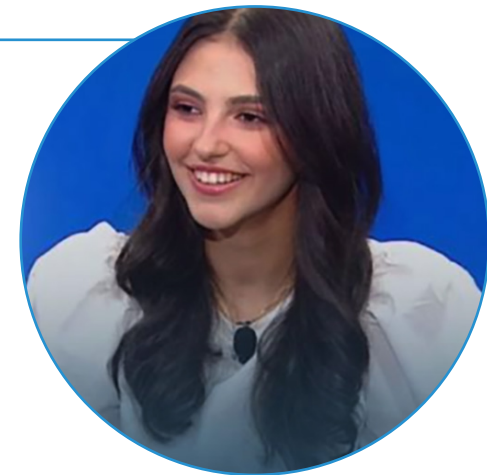
- It's a place where you can express your feelings and let your creativity flow, and it feels like a second home.

- It's a place where you can really grow and learn, because the people surrounding you all want the best for you"

Emma Guy, Student



BISM and Beyond



Last spring, our former student Yasma Esteitieh won a silver medal at the World Championships for Young Scientists for her mathematical model to improve the treatment of triple-negative breast cancer. And this year, on International Women's Day, she was voted in as one of a hundred Swedish Women of the Year, mainly for her cancer research project. Right now, she is in Paris working on a medical startup initiative.

Yasma joined BISM in PYP2 and continued all the way through MYP. She is now 18 years old and has recently graduated a year early from Malmö Borgarskola. From January 2025 she will study medicine at Lund University.

"I think BISM has a very homely feeling and the teachers are great. They are so supportive, and the level of education is very high. It makes you well prepared for the future. Given that I developed this strong foundation, it was easy to go be successful in high school, but also to continue to university. I really feel that this background prepared me well for my medical research, as I acquired a way of thinking that could be easily applied to further studies, and even to very challenging subjects like biology and maths. The school gave me the tools for the right way of thinking. I believe that the teachers played a very big part, helping us outside of class, and getting us involved in extra classes and competitions"



The IB aims to develop internationally minded individuals, through the Learner Profile, who recognize shared humanity and work towards a better, more peaceful world.

As IB learners, we strive to be:



Inquirers: Curious, skilled in inquiry and research, with a lifelong love of learning.



Open-minded: Appreciating diverse cultures, traditions, and perspectives.



Knowledgeable: Conceptual understanding across disciplines, engaging with global issues.



Caring: Empathetic and committed to making a positive impact.



Thinkers: Critical and creative thinkers, making ethical decisions and taking responsible actions.



Risk-takers: Facing uncertainty with resilience, resourcefulness, and determination.



Communicators: Expressive in multiple languages, collaborating effectively.



Balanced: Maintaining well-being through a balance of intellectual, physical, and emotional aspects.



Principled: Acting with integrity, fairness, and respect for others' rights.



Reflective: Thoughtfully considering experiences and working to understand strengths and weaknesses.

10 Reasons

Primary Years Programme

why the IB Primary Years Programme (PYP) is ideal for students to become active, lifelong learners



International Baccalaureate
Baccalaureat International
Bachillerato Internacional

Based on IB research. www.ibo.org/research

© International Baccalaureate Organization 2016
International Baccalaureate® | Baccalaureat International® | Bachillerato Internacional®

IB Primary Years Programme

The Primary Years Programme (PYP) is designed for students aged 6 to 11. The programme emphasises the holistic development of the child, encouraging inquiry-based learning through six transdisciplinary themes of global significance. Students engage with knowledge and skills from various subject areas, fostering academic, social, and emotional growth. The PYP aims to develop independent learners who understand the world and contribute as global citizens. With a flexible curriculum framework, the PYP at BISM prepares students for the Middle Years Programme and beyond.



Kumari Nevill
Primary School Principal

"In the PYP we nurture curiosity, critical thinking, and a love for learning in a caring and supportive environment; preparing your child to thrive as a compassionate, global-minded individual"

10 Reasons

Middle Years Programme

why the IB Middle Years Programme (MYP) encourages you to become a creative, critical and reflective learner



International Baccalaureate
Baccalaureat International
Bachillerato Internacional

Based on IB research - www.ibo.org/research

© International Baccalaureate Organization 2016
International Baccalaureate® | Baccalaureat International® | Bachillerato Internacional®

IB Middle Years Programme

The Middle Years Programme (MYP) is designed for students aged 11 to 16. It encourages students to become creative, critical, and reflective thinkers, fostering intellectual challenge and helping students connect their learning to the real world. The MYP focuses on developing skills for communication, intercultural understanding, and global engagement, essential for future global leaders. The curriculum is structured around eight subject groups and emphasises service within the community, conceptual understanding, and learning in context, preparing students for the IB Diploma Programme (DP), other Secondary school programmes, and beyond.



Daniel McClair
Middle School Principal

"The MYP at BISM invites you to explore new perspectives, challenge your thinking, growing as individuals; and preparing you not just for academic success, but for life beyond the classroom"

Fritids - After School Care

The Fritids Programme provides meaningful and enriching care for children outside school hours. It is designed to support families needing additional care, due to work or studies.

The programme fosters a recreational environment where students can engage in a variety of activities, building positive social relationships and enjoying creative play. The focus is on offering new experiences that challenge children, while meeting their individual needs.

Fritids is available during school breaks, with flexible hours, and the fees are regulated based on household income.

“With our committed staff and clear goals, the fritids department serves to develop each child’s potential and create a meaningful time outside of school hours”

Filipe Ferraz
Fritids Coordinator



FOLLOW US ON
**SOCIAL
MEDIA**
📷 📘



Extra Curricular Activities

At BISM we believe in nurturing well-rounded individuals by providing a diverse range of extracurricular activities that complement our academic curriculum. Our extracurricular program offers students opportunities to explore their interests, develop new talents, and foster social connections outside the classroom: from Music, Choir, Sports, Lego Robotics/Programming, Science Club, to Mother Tongue classes.

We offer activities to cater to the varied interests and passions of our students. Led by experienced coaches, and instructors, our extracurricular activities promote teamwork, leadership, creativity, and personal expression. Our extracurricular program enriches the educational experience and helps students develop lifelong skills and friendships.



Academic Success

At BISM, together with thousands of other international schools worldwide, we use the diagnostic test, Measures of Academic Progress (MAP), to measure student progress, to track their development over time, both throughout the school year and across multiple years. Currently, tests are conducted in reading, language usage, and mathematics once in the autumn term and once in the spring term.

It provides insights into each student’s performance relative to their year group internationally, and offers strategies to support them in different subject areas while setting learning goals.

MAP Growth provides data around the typical growth for students who are in the same grade, are testing in the same subject, and have the same starting achievement level. This data is often used to help students set goals and understand how much they need to learn to achieve their goals. Principals and administrators can also use the scores to see the performance and progress of a grade level, school, and regions.

Teachers use the scores combined with summative and formative assessment tasks to develop classroom-level strategies for equitable instruction that help maximize every student’s learning potential. Since we started with the diagnostic MAP testing in 2022, the individual student growth factor has increased exponentially. This has played an important part in the incredible achievements of our 2024 graduating cohort. **Their combined average merit score (meritvärde) of 290.8, is one of the highest in Sweden!**

map GROWTH

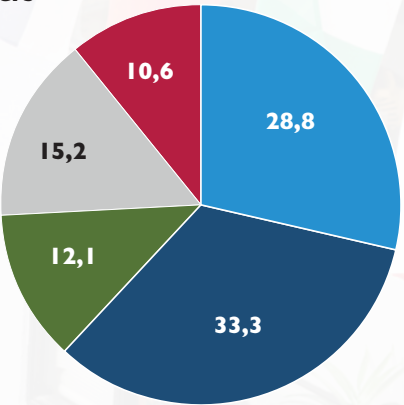


Learn more about MAP

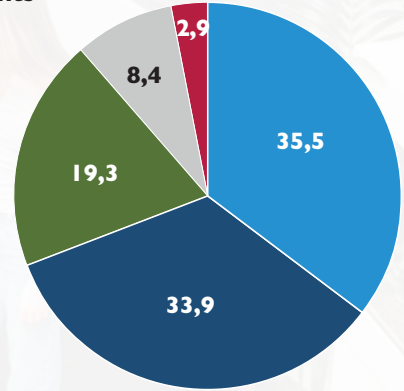
A Truly International School

Where our teachers and students come from

Teachers



Students



● Sweden ● Europe ● Asia & Oceania
● Americas ● Africa & Middle East

Why Our Community Recommends BISM



Manuela Tombesi

“We moved to Sweden a year ago and Bladins has immediately welcomed our daughters and our family into its friendly community. The teaching staff is well prepared, passionate and attentive to the emotional, social and psychological growth of our children. I can strongly recommend BISM”



Daniel Elmgren

“The teachers do an absolute fantastic job in creating a space where the children can express themselves really well”



Nora McWilliam

“When I came here, I had never met a more engaged and caring community before. The teachers really, truly care about the children and provide an environment where the children can flourish”



Caroline Pålsson

“BISM is the clear choice for an international education in Malmö. My children get an IB education in a safe environment with very good teachers and a nice parents’ association to top it off”



Akika Tanaka

“Bladins International School is a multi-cultural, small community. I think everybody can find their space here”

Connecting Excellence in the Nordic Network

BISM is a proud member of the Nordic Network, a collaboration between international schools in the Nordic and Baltic regions. Through this network, our teachers and students benefit from professional development, the exchange of best practices, and international partnerships. This enhances the school's international profile and promotes high-quality education while offering students a broader global perspective and increased learning opportunities. The Nordic Network helps build a strong community among international schools in the region, with a shared focus on delivering education of the highest standard.

“Organising the Nordic Network Sports Tournament was both challenging and rewarding. However, witnessing the students’ excitement and the connections they built made it all worthwhile. It wasn’t just about competition; it was about bringing schools together and building lasting friendships”

Daniel McClaer, Middle School Principal & PHE Coordinator



WHY BISM?

“We chose BISM for the quality of education and the dedication of the teachers”

The IB Network - A Global Community of Learners

BISM is part of the global IB network, which connects over 5,000 schools in more than 150 countries. As an IB World School, BISM follows the rigorous standards and philosophy of the IB, which emphasise academic excellence, critical thinking, and global-mindedness. The IB network allows BISM to collaborate with like-minded schools worldwide, sharing resources and best practices while fostering a diverse and inclusive learning environment. Being part of this network ensures that our students are prepared for global challenges and have access to a world-class education recognised internationally.

Building a **Strong** Inclusive Community

The diverse, inclusive, and collaborative community of BISM creates an environment that values international-mindedness and global citizenship. Central to this community is the active Parents' Association (PA) board, which plays a key role in organising events, supporting school initiatives, and facilitating open communication between parents and the school. Through a variety of school events, student-led initiatives, and parent-teacher collaboration, the BISM community provides a nurturing and supportive atmosphere where students and families can thrive and contribute to the school's vibrant spirit.



WHY BISM?

“We love the cultural experiences, international environment, and the possibility to easily transition schools if we relocate”



WINTER FAIR



SPRING FAIR



MYP BAND



STUDENTS HELPING STUDENTS



ONE OF THE HIGHEST IN SWEDEN



Outdoor education

The BISM Outdoor Education Programme offers students a unique opportunity to explore nature and develop essential life skills through hands-on experiences. With exciting activities like hiking, camping trips, and canoeing adventures, students are immersed in the beauty of the outdoors while building teamwork and resilience. Our staff ensures a safe and enriching environment for all participants. Through these adventures, students learn important principles of environmental stewardship and gain confidence in their physical abilities. Each trip fosters leadership skills, self-reliance, and a deeper connection to the natural world. Whether navigating trails, setting up camp, or paddling on serene waters, students are encouraged to challenge themselves and grow. Outdoor Education at our school is an unforgettable journey that promotes **personal growth, adventure and lifelong memories.**

In order to cater to the needs of globally mobile families, we have a rolling admissions system. This means that we are open for applications throughout the academic year, not only at the beginning of terms. Families are welcome to apply regardless of nationality, ethnicity, gender, or religion. Admissions for Bladins Preschool are based on a waiting list, where we also apply sibling priority, which means that siblings attending our preschool will be prioritised, as long as the family meets the necessary entrance requirements listed on our website. *We look forward to receiving your family's application!*



"At our school, we embrace diversity and recognize that families may relocate at different times throughout the year. Our open-minded approach ensures that each student can smoothly integrate into our vibrant learning community, regardless of when they join or where they are from"

Rebecca Andersson, Admissions Officer

Contact: +46 (0)704-84 82 14, rebecca.andersson@bladins.se, www.bladins.se/bism



[bladins_international_school](https://www.instagram.com/bladins_international_school)



BISM-Bladins International School of Malmö